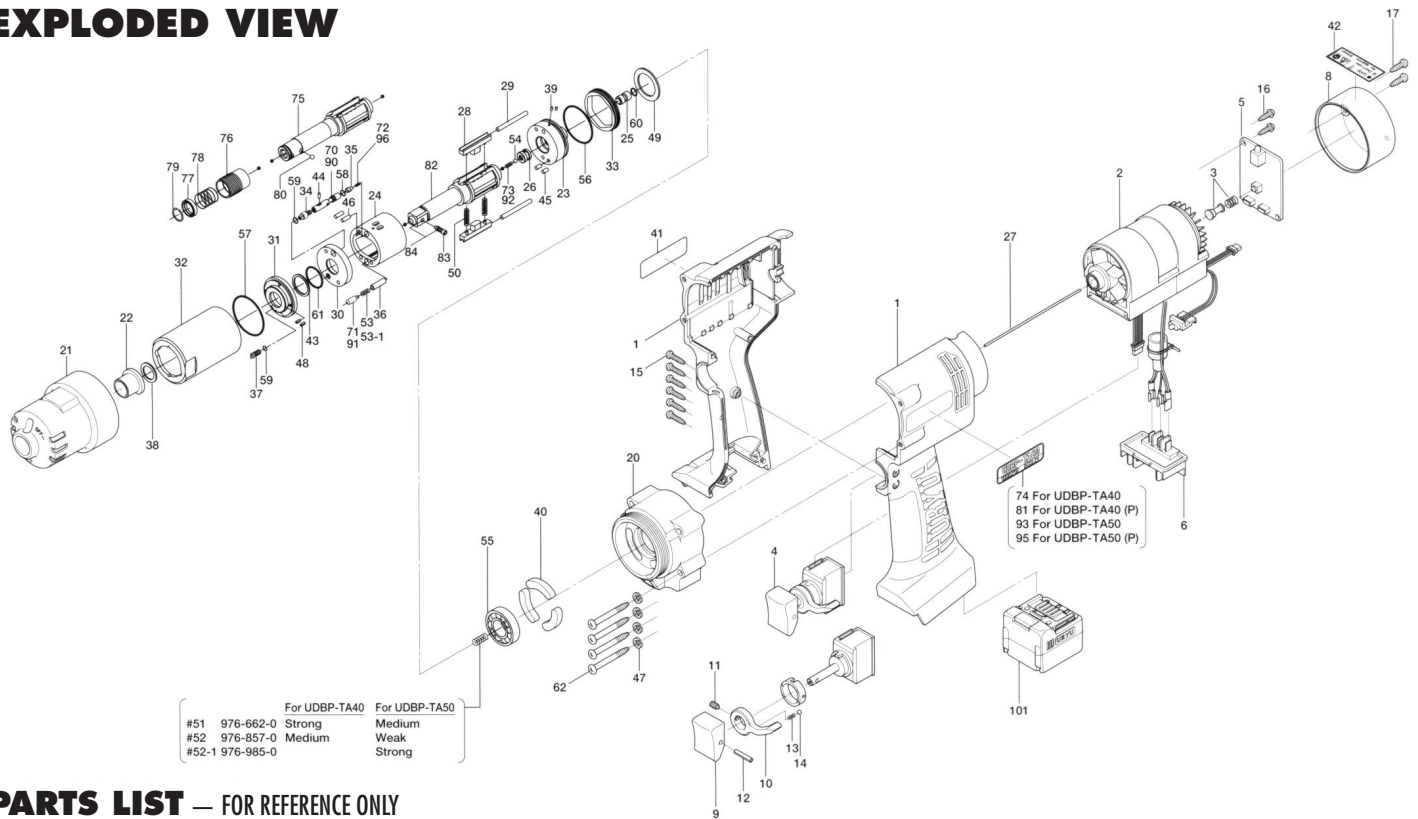


UDBP-TA40 & TA50 SERIES BATTERY OIL-PULSE TOOLS

EXPLODED VIEW



PARTS LIST — FOR REFERENCE ONLY

Index Number	Part Number	Description	Qty.
COMMON PARTS			
863-968-1 Handle Assembly			
1	863-958-1	Handle (R & L)	1
2	861-192-1	Motor Assembly	1
3	861-173-1	Slide Base Assembly	1
4	098-174-4	Switch Assembly	1
5	863-972-1	Operating Board (with LED)	1
6	861-193-1	Battery Contact	1
8	861-178-1	Handle Cover	1
9	147-107-2	Valve Lever	1
10	098-212-4	Reverse Lever	1
11	973-018-0	Roll Pin (2 x 18)	1
12	973-014-0	Roll Pin (2 x 14)	1
13	976-006-0	Spring (3 x 5)	1
14	981-002-0	Ball (1/8)	1
15	861-179-1	Tapping Screw	7
16	861-180-1	Tapping Screw	2
17	861-181-1	Tapping Screw	2
20	093-065-8	Handle Front Cover	1
21	093-439-8	Front Casing	1
22	190-328-6	Anvil Bushing	1
23	188-901-2	Rear Liner Plate	1
24	188-902-2	Liner	1
25	145-546-6	Piston	1
26	145-929-6	Check Valve Cover	1
27	092-130-8	Operating Rod (1.4 x 82.7)	1
28	145-440-0	Driving Blade	2
29	145-974-0	Roller Pin (2.5 x 21)	2
30	18C-973-8	Liner Casing Spacer	1
31	145-904-6	Front Liner Plate	1
32	145-905-0	Liner Casing	1
33	145-906-6	Liner Casing Cover	1
34	145-907-6	Relief Valve Spindle	1
35	144-270-0	Pressure Regulator Valve	1
36	080-274-6	Spring Holder	1
37	194-742-0	Oil Plug	1
38	145-327-7	Anvil Front Spacer	1
39	150-064-5	Plug	2
40	080-835-3	Filter	3
41	094-997-4	Plate (Address & Others)	1

Index Number	Part Number	Description	Qty.
42	094-995-4	Plate (Warning)	1
43	944-212-0	Back-up Ring (12 x 16 x 1.5)	1
44	970-013-0	Pin (H) (1.5 x 4)	1
45	970-130-0	Pin (H) (2.45 x 4.5)	2
46	970-131-0	Pin (H) (2.45 x 9.5)	2
47	962-006-0	Spring Washer (2-45)	4
48	973-040-0	Roll Pin (1.5 x 5)	2
49	975-752-0	Adjusting Spacer (15 x 10 x 1)	1
50	976-791-0	Spring (3.3 x 21) WPC	2
54	981-001-0	Ball (3/32)	1
55	982-902-0	Ball Bearing (6901)	1
56	990-329-0	O-Ring (JW-1530-19)	1
57	990-605-0	O-Ring (25 x 1.45)	1
58	990-621-0	O-Ring (3.8 x 1.8 x 1.0)	1
59	990-900-0	O-Ring (SNS-2)	2
60	991-025-0	X-Ring (4.7 x 2.2 x 1.25)	1
61	991-030-0	X-Ring (X12)	1
62	963-363-0	Tapping Screw (M4 x 35)	4
PARTS FOR UDBP-TA40 SERIES			
51	976-662-0	Spring (3.3 x 18) Strong	1
52	976-857-0	Spring (3.3 x 17) Medium	1
53	976-842-0	Spring (2.9 x 13.5) WPC	1
70	144-970-0	Relief Valve	1
71	17C-276-4	Pressure Adjusting Valve	1
72	976-853-0	Spring (2.9 x 7.5)	1
73	976-645-0	Spring (2.4 x 5) (0.3)	1
FOR UDBP-TA40			
74	077-924-0	Name Plate UDBP-TA40	1
75	145-350-2	Driver Anvil	1
76	011-351-1	Bit Sleeve	1
77	011-352-1	Bit Spacer	1
78	976-327-0	Spring (13.5 x 11)	1
79	978-117-0	Snap Ring (11.7 x 1)	1
80	981-002-0	Ball (1/8)	1
FOR UDBP-TA40(P)			
81	077-924-4	Name Plate UDBP-TA40(P)	1
82	145-319-0	Anvil	1

Index Number	Part Number	Description	Qty.
83	891-300-1	Socket Pin Assembly	1
84	891-554-1	Anvil Assembly	1
PARTS FOR UDBP-TA50 SERIES			
51	976-662-0	Spring (3.3 x 18) Medium	1
52	976-857-0	Spring (3.3 x 17) Weak	1
52-1	976-985-0	Spring (3.3 x 18) Strong	1
53-1	976-778-0	Spring (3.0 x 12.1)	1
90	093-970-8	Relief Valve	1
91	078-276-7	Pressure Adjusting Valve	1
92	976-526-0	Spring (2.4 x 5.5) (0.26)	1
96	976-895-0	Spring (2.8 x 7.7)	1
FOR UDBP-TA50			
93	078-924-5	Name Plate UDBP-TA50	1
75	145-350-2	Driver Anvil	1
76	011-351-1	Bit Sleeve	1
77	011-352-1	Bit Spacer	1
78	976-327-0	Spring (13.5 x 11)	1
79	978-117-0	Snap Ring (11.7 x 1)	1
80	981-002-0	Ball (1/8)	1
FOR UDBP-TA50(P)			
95	079-924-0	Name Plate UDBP-TA50(P)	1
82	145-319-0	Anvil	1
83	891-300-1	Socket Pin Assembly	1
84	891-554-1	Anvil Assembly	1
ACCESSORIES			
100	939-091-0	Allen Wrench (1.5)	1
101	861-188-1	Battery (UB111Li)	1
102	861-185-1	Battery Charger (UBC-A) with Power Cord	1
103	861-186-1	Battery Charger (UBC-E) with Power Cord	1
104	861-196-1	Power Cord for UBC-A	1
105	861-197-1	Power Cord for UBC-E	1
110	863-964-1	Handle Protector	1
111	863-976-1	Battery Protector	1



10000 SE PINE
 PORTLAND, OR 97216
 503-254-6600
 FAX 503-255-2615

When ordering spare parts, please specify tool type, part number, and description.

FOOTNOTES