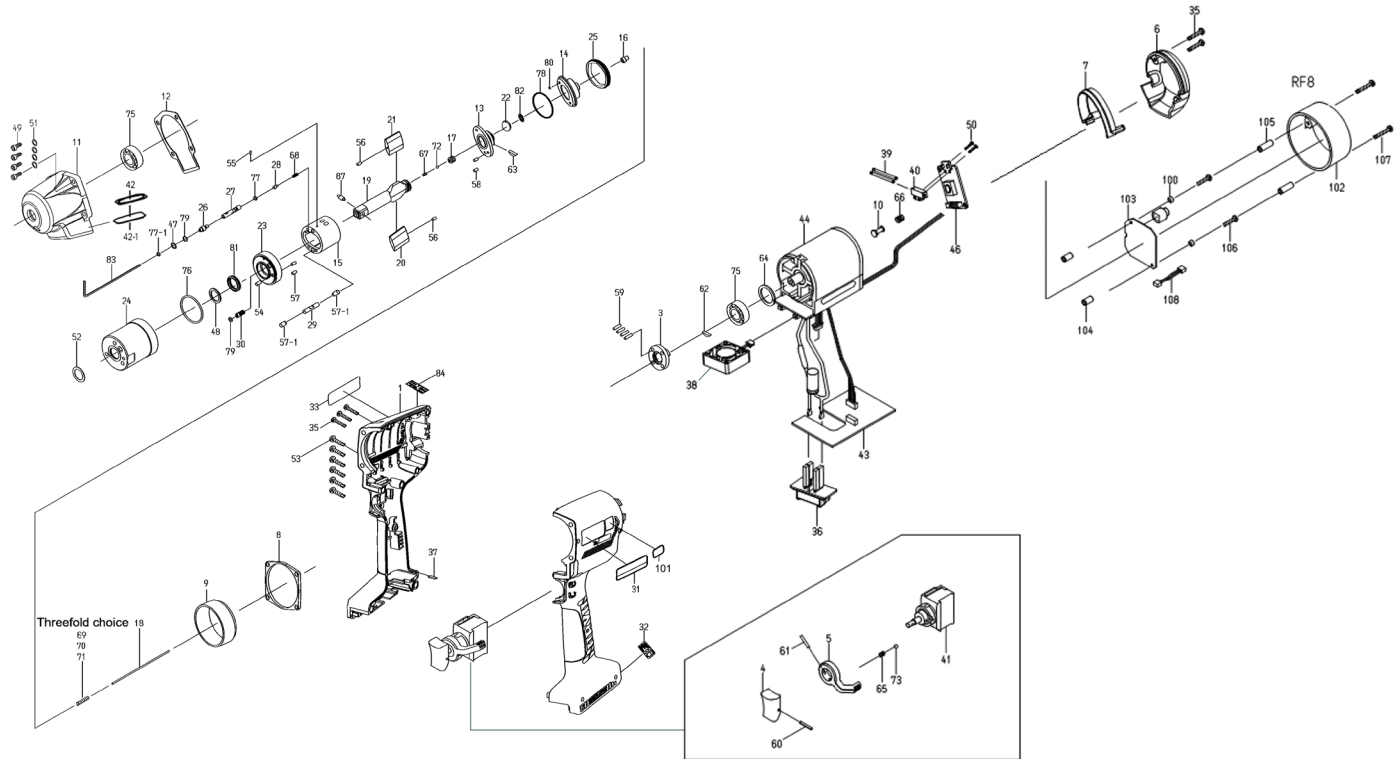


UBX-T80 SHUT-OFF BATTERY PULSE TOOL

EXPLODED VIEW



PARTS LIST — FOR REFERENCE ONLY

Index Number	Part Number	Description	Qty.	Index Number	Part Number	Description	Qty.	Index Number	Part Number	Description	Qty.
COMMON PARTS											
1	12F-025-0	Handle	1	39	910-449-0	Elastomer Tube	2	76	990-334-0	O-Ring (JW1530-24)	1
3	12F-079-0	Connector	1	40	910-468-0	LED Cover	1	77	990-621-0	O-Ring (3.8 x 1.8 x 1.0)	1
4	147-107-2	Trigger	1	41	910-475-0	Switch Assembly	1	77-1	990-623-0	O-Ring (4.6 x 3.0 x 0.8)	1
5	09B-212-5	Reverse Lever	1	42	910-477-0	Mesh Plate	1	78	990-985-0	O-Ring (SNS-28)	1
6	12F-012-0	Head Cover	1	42-1	910-418-0	Mesh	1	79	990-970-0	O-Ring (SNS-2) (NOK)	2
7	12F-013-0	Handle Upper Cover	1	43	911-046-0	Battery Board Assembly	1	80	990-620-0	O-Ring (3.8 x 2.2 x 0.8) (Ro10)	1
8	12F-035-0	Connector	1	44	911-048-0	Motor (T80 type) L = 35	1	81	991-030-0	X-Ring (X12)	1
9	12F-036-0	Hammer Case Connector	1	46	863-891-1	Control Board c/w LED and Buzzer	1	82	996-280-0	Diaphragm	1
10	12F-038-0	Slide Base	1	47	944-203-0	Supporting Ring (3.1 x 5 x 1)	1	83	939-091-0	Allen Wrench	1
11	12F-439-5	Front Case	1	48	944-013-0	Backup Ring P12	1	84	094-995-4	Plate (Caution)	1
12	12F-867-0	Front Case Packing	1	49	945-026-0	Allen Head Bolt (M4 x 16)	4	87	891-300-1	Socket Pin Assembly (3/8)	1
13	12F-901-0	Liner Rear Plate	1	50	957-063-0	Allen Head Screw (M2 x 4)	2	PARTS FOR UBX-T80-RF8			
14	12F-310-0	Anvil Front Spacer	1	51	961-009-0	Round Washer (M4) (8 x 0.5)	4	100	863-980-1	Washer	2
15	12A-902-8	Liner	1	52	962-800-0	Wave Washer (BWW-625)	1	101	10E-924-7	Name Plate	1
16	12F-546-0	Piston	1	53	963-253-0	Tapping Screw (3 x 16)	6	102	863-984-1	Body Cover	1
17	145-929-6	Check Valve Cover	1	54	973-040-0	Roll Pin (1.5 x 5)	2	103	863-985-1	Wireless Board	1
18	12F-130-0	Operating Rod (1.8 x 65.5)	1	55	970-013-0	Pin (H) (1.5 x 4)	1	104	911-043-0	Spacer (C-2605.5)	2
19	12F-319-5	Anvil	1	56	970-014-0	Pin (H) (1.5 x 6.8)	2	105	911-044-0	Spacer (C-2611)	2
20	12F-440-5	Driving Blade (A)	1	57	970-131-0	Pin (H) (5.45 x 9.5)	2	106	861-436-1	Tapping Screw (2.6 x 16)	2
21	12F-440-6	Driving Blade (B)	1	57-1	970-307-0	Pin (H) (4 x 7)	2	107	963-256-0	Tapping Screw (2.6 x 25)	2
22	12F-835-0	Filter (K200)	1	58	972-033-0	Pin (2.5 x 8)	2	108	863-952-1	Wireless Board Cable	1
23	12F-904-1	Liner Front Plate	1	59	972-087-0	Pin (3 x 6)	4	OPTIONAL ACCESSORIES			
23-1	12F-973-0	Liner Casing Spacer	1	60	973-014-0	Roll Pin (2 x 14)	1	12F-840-5	Handle Protector (for Standard model)	1	
24	12F-905-6	Liner Casing	1	61	973-018-0	Roll Pin (2 x 18)	1	12F-840-6	Handle Protector (for RF8 model)	1	
25	12A-906-3	Liner Casing Cover	1	62	974-952-0	Half-moon Key (3 x 12) (3)	1				
26	174-907-2	Relief Valve Spring	1	63	974-961-0	Half-moon Key (1.5 x 15.8)	1				
27	12F-970-5	Relief Valve	1	64	975-798-0	Adjusting Spacer (24 x 18 x t)	1				
28	144-270-0	Pressure Valve	1	65	976-006-0	Spring (3 x 5) (0.4)	1				
29	12F-276-6	Pressure Valve Body	1	66	976-499-0	Spring (7.3 x 9.4) (0.4)	1				
30	194-742-0	Oil Plug	1	67	976-847-0	Spring (2.4 x 5.3) (0.26) n=7.5	1				
31	12F-924-5	Name Plate	1	68	976-677-0	Spring 2.8 x 7 (0.4)	1				
32	12F-993-0	Plate (Specifications)	1	69	976-563-0	Spring (3.3 x 8.5) (0.45) (Standard)	1				
33	094-997-4	Plate (Others)	1	70	976-497-0	Spring (3.3 x 8.7) (0.45) (Yellow) (Strong)	1				
35	963-258-0	Tapping Screw M2.6 x 16	5	71	976-829-0	Spring (3.3 x 8.5) (0.4) (Weak)	1				
36	910-383-0	Battery Terminal Block	1	72	981-001-0	Ball (3/32)	1				
37	910-404-0	Level Display Cover	1	73	981-002-0	Ball (1/8)	1				
38	910-484-0	Fan Assembly	1	75	982-922-0	Ball Bearing (6901ZZ)	2				

FOOTNOTES



10000 SE PINE
PORTLAND, OR 97216
503-254-6600
FAX 503-255-2615

When ordering spare parts, please specify tool type, part number, and description.