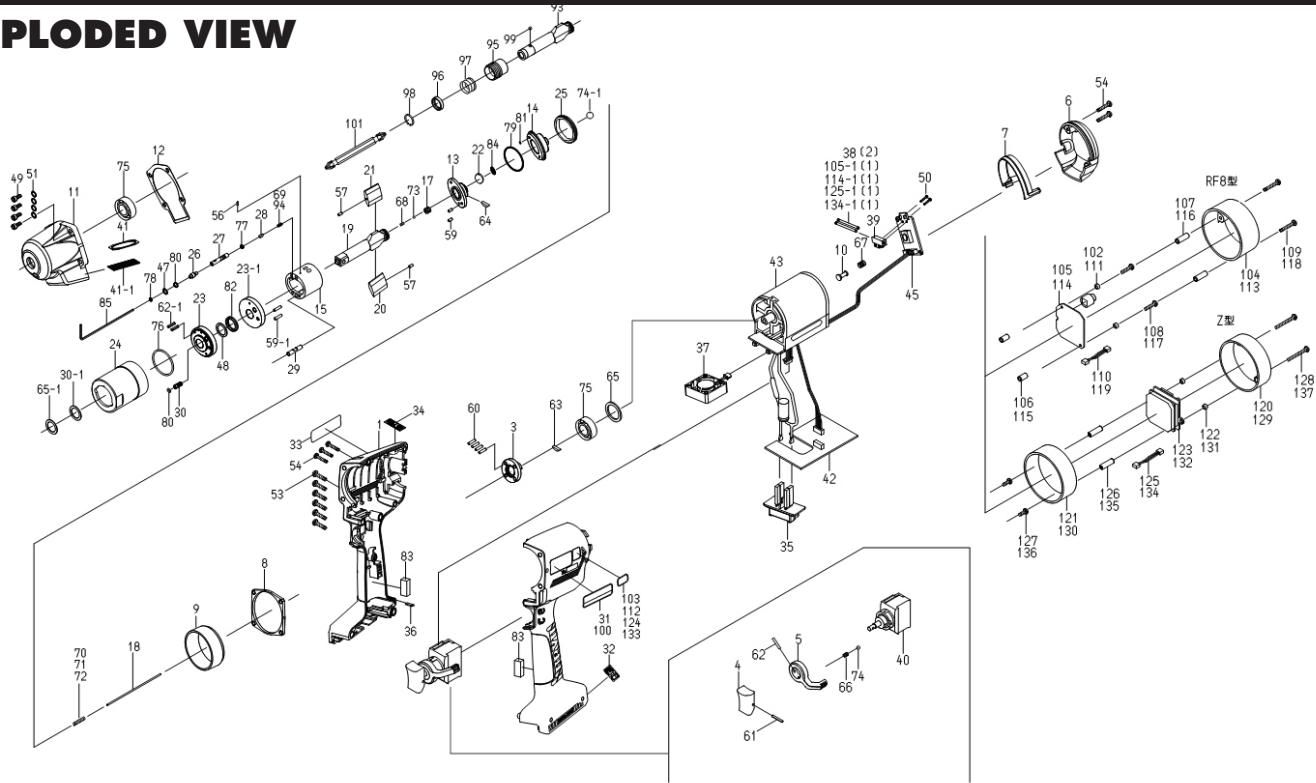


UBX-T50(D)(RF8)(Z) SHUT-OFF BATTERY PULSE TOOL

EXPLODED VIEW



PARTS LIST — FOR REFERENCE ONLY

Index Number	Part Number	Description	Qty.	Index Number	Part Number	Description	Qty.	Index Number	Part Number	Description	Qty.	
1	12D-025-1	Handle	1	53	963-253-0	Tapping Screw 3 x 16	6	104	863-984-1	Head Cover	1	
3	12F-079-0	Connector	1	54	963-258-0	Tapping Screw M2.6 x 16	5	105	863-985-1	Wireless Board	1	
4	147-107-2	Trigger	1	56	970-013-0	Pin (H) 1.5 x 4	1	105-1	910-449-0	Elastomer Tube Ø2	1	
5	09B-212-5	Reverse Lever	1	57	970-014-0	Pin (H) 1.5 x 6.8	2	106	911-043-0	Spacer C-2605.5	2	
6	12F-012-0	Body Cover	1	59	972-033-0	Pin 2.5 x 8	2	107	911-044-0	Spacer C-2611	2	
7	12F-013-0	Head Cover	1	59-1	972-029-0	Pin 2.5 x 10	2	108	861-436-1	Screw 2.6 x 16	2	
8	12F-035-0	Handle Connector	1	60	972-087-0	Pin 3 x 6	4	109	963-262-0	Round Head Tapping Screw A M2.6 x 25	2	
9	12F-036-0	Hammer Casing Connector	1	61	973-014-0	Roll Pin 2 x 14	1	110	863-952-1	Wireless Board Cable Assembly	1	
10	12F-038-0	Slide Base	1	62	973-018-0	Roll Pin 2 x 18	1	Parts for UBX-T50D-RF8				
11	12E-439-1	Front Casing	1	62-1	973-040-0	Roll Pin 1.5 x 5	2	111	863-980-1	Washer	2	
12	12F-867-0	Front Casing Packing	1	63	974-952-0	Woodruff Key 3 x 12 (3)	1	112	10E-924-7	Sticker	1	
13	12F-901-0	Rear Front Plate	1	64	974-961-0	Woodruff Key 1.5 x 15.8	1	113	863-984-1	Head Cover	1	
14	12F-310-0	Anvil Liner Spacer	1	65	975-798-0	Adjusting Spacer 24 x 18 x t	1	114	863-985-1	Wireless Board	1	
15	12A-902-4	Liner	1	65-1	975-754-0	Adjusting Spacer 17 x 12.5 x t	1	114-1	910-449-0	Elastomer Tube Ø2	1	
17	130-929-4	Check Valve Cover	1	66	976-006-0	Spring 3 x 5 (0.4)	1	115	911-043-0	Spacer C-2605.5	2	
18	12D-130-2	Operating Rod 1.8 x 68	1	67	976-499-0	Spring 7.3 x 9.4 (0.4)	1	116	911-044-0	Spacer C-2611	2	
19	12E-319-1	Anvil	1	68	976-847-0	Spring 2.4 x 5.3 (0.26) n=7.5	1	117	861-436-1	Screw 2.6 x 16	2	
20	12A-440-3	Driving Blade (A)	1	69	977-558-0	Spring 2.85 x 5.9 (0.35) n=6.25	1	118	963-262-0	Round Head Tapping Screw A M2.6 x 25	2	
21	12A-440-4	Driving Blade (B)	1	Choose one from #70, #71 or #72				119	863-952-1	Wireless Board Cable Assembly	1	
22	12F-835-0	Filter (K200)	1	70	977-554-0	Spring 3.3 x 14.5 (0.3) (Standard)	1	Parts for UBX-T50(Z)				
23	12D-904-2	Front Liner Plate	1	71	976-994-0	Spring 3.3 x 13.2 (0.35) (Strong)	1	120	10E-012-1	Head Cover	1	
23-1	12F-973-1	Liner Casing Spacer	1	72	977-553-0	Spring 3.3 x 14 (0.3) (Weak)	1	121	10F-309-2	Casing Cover Bushing	1	
24	12U-905-2	Liner Casing	1	73	981-001-0	Ball 3/32	1	122	975-540-0	Spacer 5 x 2.8 x 0.8 (P)	2	
25	12A-906-3	Liner Casing Cover	1	74	981-002-0	Ball 1/8	1	123	863-902-1	ZigBee Pokayoke Board Assembly	1	
26	12F-907-0	Relief Valve Spindle	1	74-1	981-218-0	Ball 5.5mm	1	124	10F-924-2	Sticker	1	
27	12D-970-2	Relief Valve	1	75	982-922-0	Ball Bearing 6901ZZ	2	125	910-491-0	Pokayoke Board Cable Assembly	1	
28	144-270-0	Pressure Valve	1	76	990-334-0	O-Ring JW/T530-24	1	125-1	910-449-0	Elastomer Tube Ø2	1	
29	12F-276-6	Pressure Valve Body	1	77	990-621-0	O-Ring 3.8 x 1.8 x 1.0	1	126	911-045-0	Spacer C-2620	2	
30	194-742-0	Oil Plug	1	78	990-623-0	O-Ring 4.6 x 3.0 x 0.8	1	127	861-180-1	Tapping Screw	2	
30-1	145-327-7	Rear Anvil Spacer	1	79	990-985-0	O-Ring SNS-28 (NOK)	1	128	963-259-0	Round Head Tapping Screw A M2.6 x 35	2	
31	12D-924-1	Sticker (Tool Model Name)	1	80	990-970-0	O-Ring SNS-2 (NOK)	2	Parts for UBX-T50D(Z) (12D61)				
32	12F-993-0	Sticker (Specifications)	1	81	990-620-0	O-Ring 3.8 x 2.2 x 0.8 (Ro10)	1	129	10E-012-1	Head Cover	1	
33	094-997-4	Sticker (Others)	1	82	992-020-0	SU-Ring Q12 (NTN)	1	130	10F-309-2	Casing Cover Bushing	1	
34	094-996-4	Sticker (Caution)	1	83	993-200-0	CR Sponge Plate 15 x 40 x 6	2	131	975-540-0	Spacer 5 x 2.8 x 0.8 (P)	2	
35	910-383-0	Battery Terminal Block	1	84	996-280-0	Diaphragm	1	132	863-902-1	ZigBee Pokayoke Board Assembly	1	
36	910-404-0	Level Display Cover	1	Parts for UBX-T50D				133	10F-924-2	Sticker	1	
37	910-484-0	Fan Assembly	1	93	12E-350-0	Bit Anvil	1	134	910-491-0	Pokayoke Board Cable Assembly	1	
38	910-449-0	Elastomer Tube Ø2	2	94	977-559-0	Spring 2.9 x 5.9 (0.35) n=6.75	1	134-1	910-449-0	Elastomer Tube Ø2	1	
39	910-468-0	LED Cover	1	95	011-351-1	Bit Sleeve (1/8)	1	135	911-045-0	Spacer C-2620	2	
40	910-475-0	Switch Assembly	1	96	011-352-1	Bit Spacer	1	136	861-180-1	Tapping Screw	2	
41	910-477-0	Mesh Plate	1	97	976-327-0	Spring 13.5 x 11 (0.9)	1	137	963-259-0	Round Head Tapping Screw A M2.6 x 35	2	
41-1	910-418-0	Mesh Sheet	1	98	978-117-0	Snap Ring 11.7 x 1	1	ACCESSORIES				
42	911-046-0	Battery Board Assembly	1	99	981-002-0	Ball 1/8	1	85	939-091-0	Allen Wrench 1.5 (80 x 20)	1	
43	911-026-0	Motor Assembly (T50) (fitted with #45)	1	100	12D-924-0	Sticker	1	101	916-810-0	(W) Bit NO.2 x 75 (6.35H) (for UBX-T50D)	1	
45	863-891-1	Control Board with LED and Buzzer	1	Parts for UBX-T50-RF8				Optional	138	12E-840-1	Body Jacket	1
47	944-203-0	Back-up Ring 3.1 x 5 x 1	1	102	863-980-1	Washer	2	139	12E-840-3	Body Jacket (RF8)	1	
48	944-212-0	Back-up Ring 12 x 16 x 1.5	1	103	10E-924-7	Sticker	1	140	12E-840-7	Body Jacket (Z type)	1	
49	945-026-0	Allen Head Bolt M4 x 16	4					141	863-993-1	Battery Protector	1	
50	957-030-0	Allen Head Screw M2 x 4	2					142	863-906-1	Relay Cable Assembly	1	
51	961-009-0	Round Washer M4 (8 x 0.5)	4									



10000 SE PINE
PORTLAND, OR 97216
503-254-6600
FAX 503-255-2615

When ordering spare parts, please specify
tool type, part number, and description.