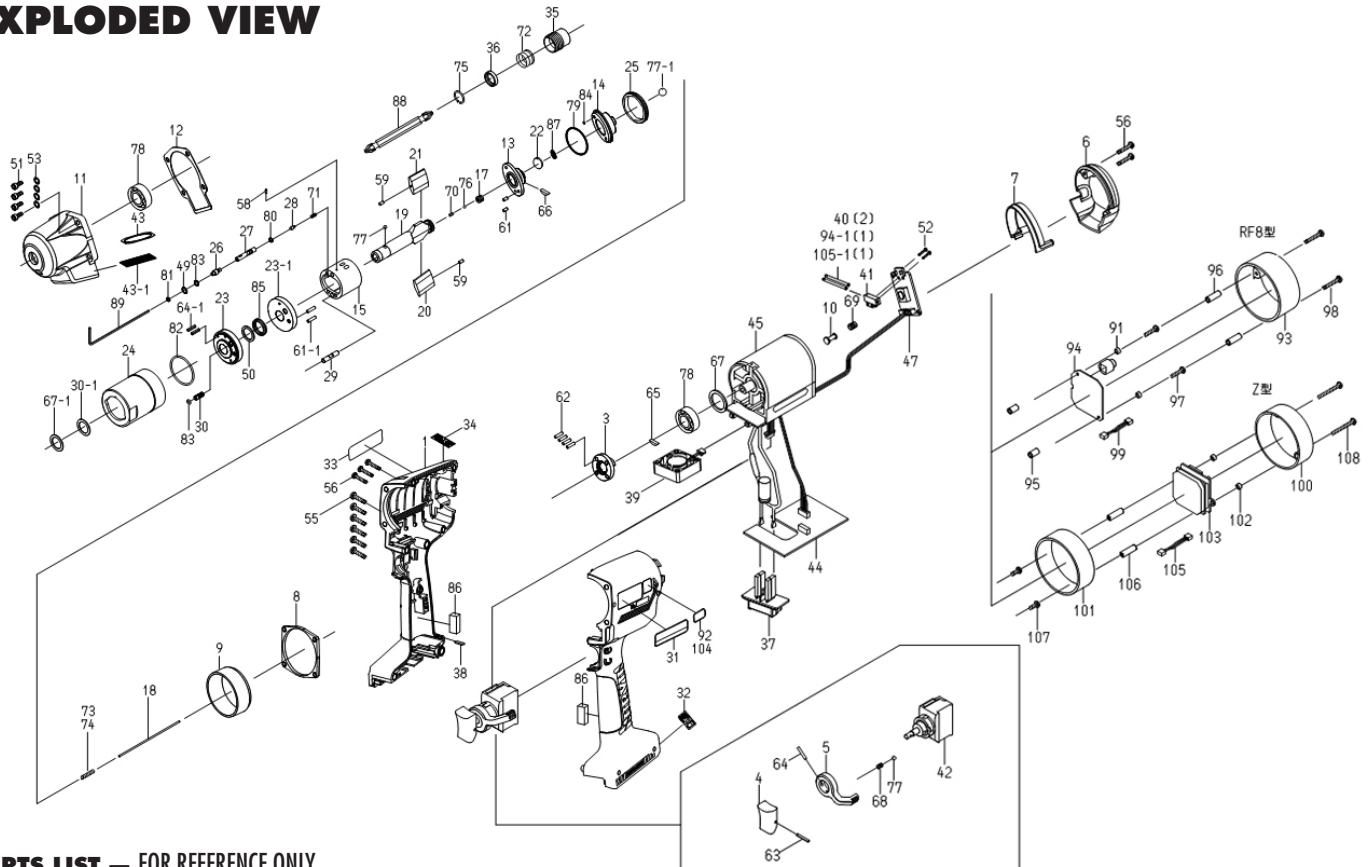


# UBX-T40D(RF8)(Z) SHUT-OFF BATTERY PULSE TOOL

## EXPLODED VIEW



### PARTS LIST — FOR REFERENCE ONLY

Index Number	Part Number	Description	Qty.	Index Number	Part Number	Description	Qty.	Index Number	Part Number	Description	Qty.
1	12D-025-1	Handle	1	42	910-475-0	Switch Assembly	1	81	990-623-0	O-Ring 4.6 x 3.0 x 0.8	1
3	12F-079-0	Connector	1	43	910-477-0	Mesh Plate	1	82	990-985-0	O-Ring SNS-28 (NOK)	1
4	147-107-2	Trigger	1	43-1	910-418-0	Mesh Sheet	1	83	990-970-0	O-Ring SNS-2 (NOK)	2
5	09B-212-5	Reverse Lever	1	44	911-046-0	Battery Board Assembly	1	84	990-620-0	O-Ring 3.8 x 2.2 x 0.8 (Ro10)	1
6	12F-012-0	Body Cover	1	45	911-025-0	Motor Assembly (T40D)	1	85	992-020-0	SU-Ring Q12 (NTN)	1
7	12F-013-0	Head Cover	1			(fitted with #47)	1	86	993-200-0	CR Sponge Plate 15 x 40 x 6	2
8	12F-035-0	Handle Connector	1	47	863-891-1	Control Board with LED and Buzzer	1	87	996-280-0	Diaphragm	1
9	12F-036-0	Hammer Casing Connector	1	49	944-203-0	Back-up Ring 3.1 x 5 x 1	1	<b>PARTS FOR UBX-T40D-RF8</b>			
10	12F-038-0	Slide Base	1	50	944-212-0	Back-up Ring 12 x 16 x 1.5	1	91	863-980-1	Washer	2
11	12E-439-1	Front Casing	1	51	945-026-0	Allen Head Bolt M4 x 16	4	92	10E-924-7	Sticker	1
12	12F-867-0	Front Casing Packing	1	52	957-030-0	Allen Head Screw M2 x 4	2	93	863-984-1	Head Cover	1
13	12F-901-0	Rear Liner Plate	1	53	961-009-0	Round Washer M4 (8 x 0.5)	4	94	863-985-1	Wireless Board	1
14	12F-310-0	Anvil Front Spacer	1	55	963-253-0	Tapping Screw 3 x 16	6	94-1	910-449-0	Elastomer Tube Ø2	1
15	12A-902-4	Liner	1	56	963-258-0	Tapping Screw B1 M2.6 x 16	5	95	911-043-0	Spacer C-2605.5	2
17	130-929-4	Check Valve Cover	1	58	970-013-0	Pin (H) 1.5 x 4	1	96	911-044-0	Spacer C-2611	2
18	12D-130-2	Operating Rod 1.8 x 68	1	59	970-014-0	Pin (H) 1.5 x 6.8	2	97	861-436-1	Screw 2.6 x 16	2
19	12E-350-0	Bit Anvil	1	61	972-033-0	Pin 2.5 x 8	2	98	963-262-0	Round Head Tapping Screw A M2.6 x 25	2
20	12A-440-3	Driving Blade (A)	1	61-1	972-029-0	Pin 2.5 x 10	2	99	863-952-1	Wireless Board Cable Assembly	1
21	12A-440-4	Driving Blade (B)	1	62	972-087-0	Pin 3 x 6	4	<b>PARTS FOR UBX-T40D(Z)</b>			
22	12F-835-0	Filter (K200)	1	63	973-014-0	Roll Pin 2 x 14	1	100	10E-012-1	Head Cover	1
23	12D-904-2	Front Liner Plate	1	64	973-018-0	Roll Pin 2 x 18	1	101	10F-309-2	Casing Cover Bushing	1
23-1	12F-973-1	Liner Casing Spacer	1	64-1	973-040-0	Roll Pin 1.5 x 5	2	102	975-540-0	Spacer 5 x 2.8 x 0.8 (P)	2
24	12U-905-2	Liner Casing	1	65	974-952-0	Woodruff Key 3 x 12 (3)	1	103	863-902-1	ZigBee Pokayoke Board Assembly	1
25	12A-906-3	Liner Casing Cover	1	66	974-961-0	Woodruff Key 1.5 x 15.8	1	104	10F-924-2	Sticker	1
26	12F-907-0	Relief Valve Spindle	1	67	975-798-0	Adjusting Spacer 24 x 18 x t	1	105	910-491-0	Pokayoke Board Cable Assembly	1
27	12C-970-0	Relief Valve	1	67-1	975-754-0	Adjusting Spacer 17 x 12.5 x t	1	105-1	910-449-0	Elastomer Tube Ø2	1
28	144-270-0	Pressure Valve	1	68	976-006-0	Spring 3 x 5 (0.4)	1	106	911-045-0	Spacer C-2620	2
29	12F-276-6	Pressure Valve Body	1	69	977-551-0	Spring 7.3 x 9.4 (0.4)	1	107	861-180-1	Tapping Screw	2
30	194-742-0	Oil Plug	1	70	976-847-0	Spring 2.4 x 5.3 (0.26) n=7.5	1	108	963-259-0	Round Head Tapping Screw A M2.6 x 35	2
30-1	145-327-7	Rear Anvil Spacer	1	71	977-550-0	Spring 2.75 x 5.8 (0.3) n=5.5	1	<b>ACCESSORIES</b>			
31	12C-924-0	Sticker (Tool Model Name)	1	72	976-327-0	Spring 13.5 x 11 (0.9)	1	88	916-810-0	(W) Bit NO.2 x 75 (6.35H)	1
32	12F-993-0	Sticker (Specifications)	1	Choose either of #73 or #74				89	939-091-0	Allen Wrench 1.5 (80 x 20)	1
33	094-997-4	Sticker (Others)	1	73	977-552-0	Spring 3.3 x 12.2 (0.3) (Standard)	1	<b>Optional</b>			
34	094-996-4	Sticker (Caution)	1	74	977-553-0	Spring 3.3 x 14 (0.3) (Strong)	1	109	12E-840-1	Body Jacket	1
35	011-351-1	Bit Sleeve (1/8)	1	75	978-117-0	Snap Ring 11.7 x 1	1	110	12E-840-3	Body Jacket (RF8)	1
36	011-352-1	Bit Spacer	1	76	981-001-0	Ball 3/32	2	111	12E-840-7	Body Jacket (Z Type)	1
37	910-383-0	Battery Terminal Block	1	77	981-002-0	Ball 1/8	1	112	863-993-1	Battery Protector	1
38	910-404-0	Level Display Cover	1	77-1	981-218-0	Ball 5.5 mm	1	113	863-906-1	Relay Cable Assembly	1
39	910-484-0	Fan Assembly	1	78	982-922-0	Ball Bearing 6901ZZ	2				
40	910-449-0	Elastomer Tube Ø2	2	79	990-334-0	O-Ring JW1530-24	1				
41	910-468-0	LED Cover	1	80	990-621-0	O-Ring 3.8 x 1.8 x 1.0	1				



10000 SE PINE  
 PORTLAND, OR 97216  
 503-254-6600  
 FAX 503-255-2615

When ordering spare parts, please specify tool type, part number, and description.

### FOOTNOTES