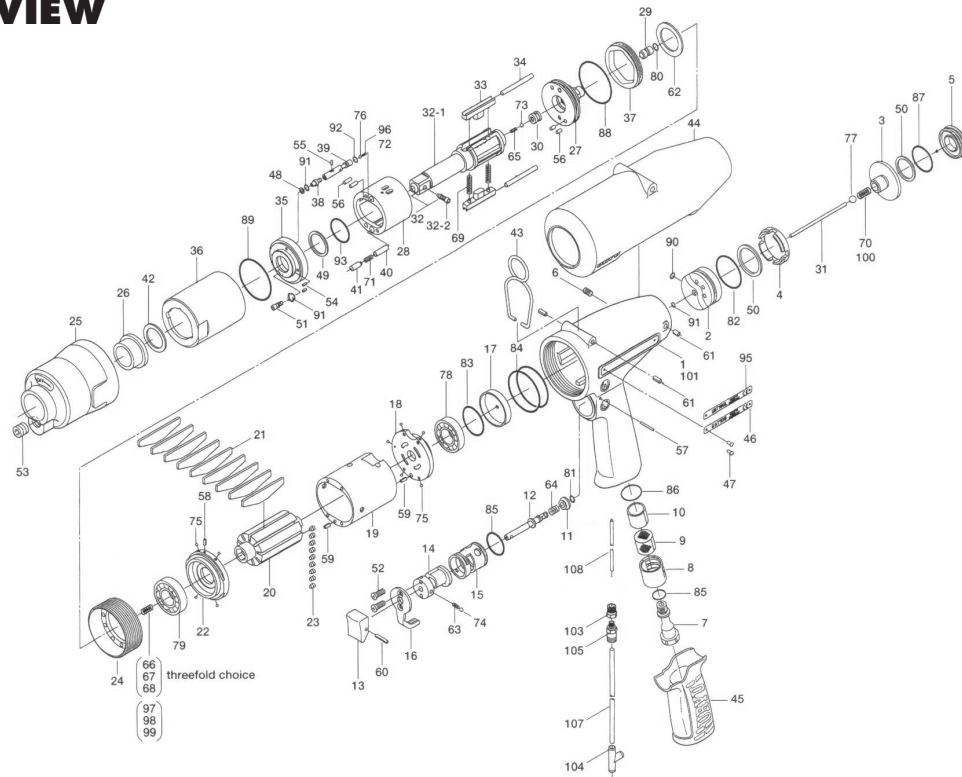


# UAT-130 SERIES OIL-PULSE WRENCH

## EXPLODED VIEW



## PARTS LIST — FOR REFERENCE ONLY

| Index Number | Part Number | Description               | Qty. | Index Number | Part Number | Description                     | Qty. | Index Number                             | Part Number | Description                       | Qty. |
|--------------|-------------|---------------------------|------|--------------|-------------|---------------------------------|------|--|-------------|-----------------------------------|------|
| 1            | 130-025-3   | Handle                    | 1    | 38           | 175-907-9   | Relief Valve Spindle            | 1    | 77                                       | 981-245-0   | Ball (4.5)                        | 1    |
| 2            | 130-253-2   | Shut-off Valve Bushing    | 1    | 39           | 130-970-2   | Relief Valve                    | 1    | 78                                       | 982-950-0   | Ball Bearing (16002)              | 1 ●  |
| 3            | 130-254-2   | Shut-off Valve            | 1    | 40           | 17F-274-7   | Pressure Valve Spring Cover     | 1    | 79                                       | 982-951-0   | Ball Bearing (16003)              | 1 ●  |
| 4            | 130-684-2   | Cushion Spacer            | 1    | 41           | 18G-276-1   | Pressure Valve Body             | 1    | 80                                       | 990-305-0   | O-Ring (APR568-003)               | 1 ■  |
| 5            | 130-019-2   | Valve Cover               | 1    | 42           | 147-327-9   | Anvil Front Spacer              | 1    | 81                                       | 990-306-0   | O-Ring (APR568-004)               | 1    |
| 6            | 150-108-5   | Valve Plug                | 1    | 43           | 174-790-0   | Suspension Ring                 | 1    | 82                                       | 990-332-0   | O-Ring (JW1530-22)                | 1    |
| 7            | 130-091-2   | Air Inlet Bushing         | 1    | 44           | 130-840-2   | Casing Cover                    | 1    | 83                                       | 990-337-0   | O-Ring (JW1530-27)                | 1    |
| 8            | 130-780-2   | Exhaust Stack             | 1    | 45           | 17F-842-7   | Handle Cover                    | 1    | 84                                       | 990-611-0   | O-Ring (51.5 X 2)                 | 2 ●  |
| 9            | 130-042-2   | Silencer                  | 1    | 46           | 18G-924-1   | Name Plate                      | 1    | 85                                       | 990-916-0   | O-Ring (SNS-18)                   | 2    |
| 10           | 130-835-3   | Filter (K50)              | 1 ●  | 47           | 930-205-0   | Driver Rivet (No. 0 X 2.6)      | 2    | 86                                       | 990-921-0   | O-Ring (SNS-22.4)                 | 1    |
| 11           | 130-100-2   | Valve                     | 1    | 48           | 944-205-0   | Back-up Ring (5.1 X 7 X 1)      | 1 ■  | 87                                       | 990-922-0   | O-Ring (SNS-28)                   | 1    |
| 12           | 130-104-2   | Valve Rod                 | 1    | 49           | 944-215-0   | Back-up Ring (16 X 19.9 X 1.5)  | 1 ■  | 88                                       | 990-930-0   | O-Ring (SNS-40)                   | 1 ■  |
| 13           | 130-107-2   | Valve Lever               | 1    | 50           | 944-223-0   | Back-up Ring (22 X 29.5 X 1.5)  | 2    | 89                                       | 990-932-0   | O-Ring (SNS-42)                   | 1 ■  |
| 14           | 130-210-2   | Reverse Valve             | 1    | 51           | 945-942-0   | Allen Head Button Bolt (M4 X 6) | 1    | 90                                       | 990-970-0   | O-Ring (SNS-2)                    | 1    |
| 15           | 130-211-2   | Reverse Valve Bushing     | 1    | 52           | 948-423-0   | Allen Flush Head Screw (M3 X 6) | 2    | 91                                       | 990-971-0   | O-Ring (SNS-3)                    | 3 ■  |
| 16           | 130-212-2   | Reverse Lever             | 1    | 53           | 966-099-0   | Allen Head Plug (NPT1/16)       | 1    | 92                                       | 990-972-0   | O-Ring (SNS-4)                    | 1 ■  |
| 17           | 130-291-3   | Rear Plate Spacer         | 1    | 54           | 969-450-0   | Pin (G)(3 X 8)                  | 2    | 93                                       | 992-021-0   | SU Ring (Q16)                     | 1 ■  |
| 18           | 130-285-2   | Rear Plate                | 1    | 55           | 970-092-0   | Pin (H)(2 X 5.5)                | 1    | <b>PARTS FOR UAT130L</b>                 |             |                                   |      |
| 19           | 130-286-2   | Cylinder                  | 1    | 56           | 970-206-0   | Pin (H)(3 X 8)                  | 4    | 95                                       | 18G-924-2   | Name Plate                        | 1    |
| 20           | 130-287-2   | Rotor                     | 1    | 57           | 971-126-0   | Pin (2 X 26)                    | 1    | 96                                       | 977-065-0   | Cone Spring (4 X 5 X 8.3)         | 1    |
| 21           | 130-288-2   | Blade                     | 9 ●  | 58           | 973-006-0   | Roll Pin (2 X 6)                | 1    | 97                                       | 976-890-0   | Spring (3.3 X 17.2) Standard      | 1    |
| 22           | 130-289-2   | Front Plate               | 1    | 59           | 973-108-0   | Roll Pin (3 X 8)                | 2    | 98                                       | 976-688-0   | Standard Spring (3.3 X 17.5) Weak | 1    |
| 23           | 148-064-2   | Plug                      | 9    | 60           | 973-120-0   | Roll Pin (3 X 20)               | 1    | 99                                       | 976-650-0   | Weak Spring (3.3 X 16) Strong     | 1    |
| 24           | 130-036-2   | Hammer Casing Connector   | 1    | 61           | 973-308-0   | Roll Pin (5 X 8)                | 4    | 100                                      | 976-802-0   | Spring (4.5 X 14)                 | 1    |
| 25           | 130-439-2   | Front Casing              | 1    | 62           | 975-790-0   | Adjusting Spacer (22 X 15 X t)  | 1    | <b>PARTS FOR UAT130TM &amp; 130L(TM)</b> |             |                                   |      |
| 26           | 147-328-8   | Anvil Bushing             | 1    | 63           | 976-006-0   | Spring (3 X 5)                  | 1    | 101                                      | 852-573-1   | Handle                            | 1    |
| 27           | 18G-901-2   | Rear Liner Plate          | 1    | 64           | 976-643-0   | Spring (7.5 X 9.7)              | 1    | 103                                      | 1/16BK1-10F | Barb 10/32 x 1/16NPT x 1/16       | 1    |
| 28           | 17F-902-7   | Liner                     | 1    | 65           | 976-962-0   | Spring (2.3 X 5.8)              | 1 ■  | 104                                      | 909-442-0   | Quick Exhaust (AQ240F-04)         | 1    |
| 29           | 145-546-6   | Piston                    | 1    | 66           | 976-662-0   | Spring (3.3 X 18) Strong        | 1    | 105                                      | PQ-MC05N    | 5/32 x 10/32 Fitting              | 1    |
| 30           | 145-929-6   | Check Valve Cover         | 1    | 67           | 976-650-0   | Spring (3.3 X 16) Standard      | 1    | 107                                      | 935-350-0   | Polyurethane Hose (F-1504)        | 1    |
| 31           | 130-130-2   | Operating Rod (2.1 X 7.3) | 1    | 68           | 976-890-0   | Spring (3.3 X 17.2) Weak        | 1    | 108                                      | 935-358-0   | Polyurethane Hose (TU-0212)       | 1    |
| 32           | 891-563-1   | Anvil Assembly            | 1    | 69           | 976-801-0   | Spring (4.5 X 35.5)             | 2 ■  | <b>ACCESSORIES</b>                       |             |                                   |      |
| 32-1         | 130-319-3   | Anvil                     | 1    | 70           | 976-963-0   | Spring (4.4 X 14.5)             | 1    | 110                                      | 939-109-0   | Allen Wrench (2)                  | 1    |
| 32-2         | 891-304-1   | Socket Pin Assembly       | 1    | 71           | 976-827-0   | Spring (4.3 X 21.5)             | 1 ■  | 111                                      | 939-105-0   | Allen Wrench (4)                  | 1    |
| 33           | 130-440-2   | Driving Blade             | 2    | 72           | 977-064-0   | Cone Spring (4.2 X 5 X 8.4)     | 1 ■  | 113                                      | 130-107-4   | Valve Lever (Option)              | 1    |
| 34           | 130-974-2   | Roller (3 X 40)           | 2    | 73           | 981-001-0   | Ball (3/32)                     | 1    | 114                                      | 909-449-0   | Speed Controller                  | 1    |
| 35           | 17F-904-7   | Front Liner Plate         | 1    | 74           | 981-002-0   | Ball (1/8)                      | 1    |  |             |                                   |      |
| 36           | 130-905-2   | Liner Casing              | 1    | 75           | 981-045-0   | Ball (1.5)                      | 9    |  |             |                                   |      |
| 37           | 130-906-2   | Liner Casing Cover        | 1    | 76           | 981-155-0   | Ball (3.5)                      | 1    |  |             |                                   |      |
|              |             |                           |      |              |             |                                 |      |  |             |                                   |      |



10000 SE PINE  
PORTLAND, OR 97216  
503-254-6600  
FAX 503-255-2615

When ordering spare parts, please specify  
tool type, part number, and description.

### FOOTNOTES

- = Parts available in Repair Kit UAT-130-RK
- = Parts available in Pulse Unit Repair Kit UAT-130-PRK