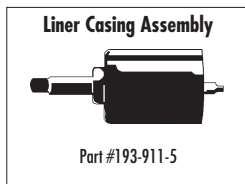
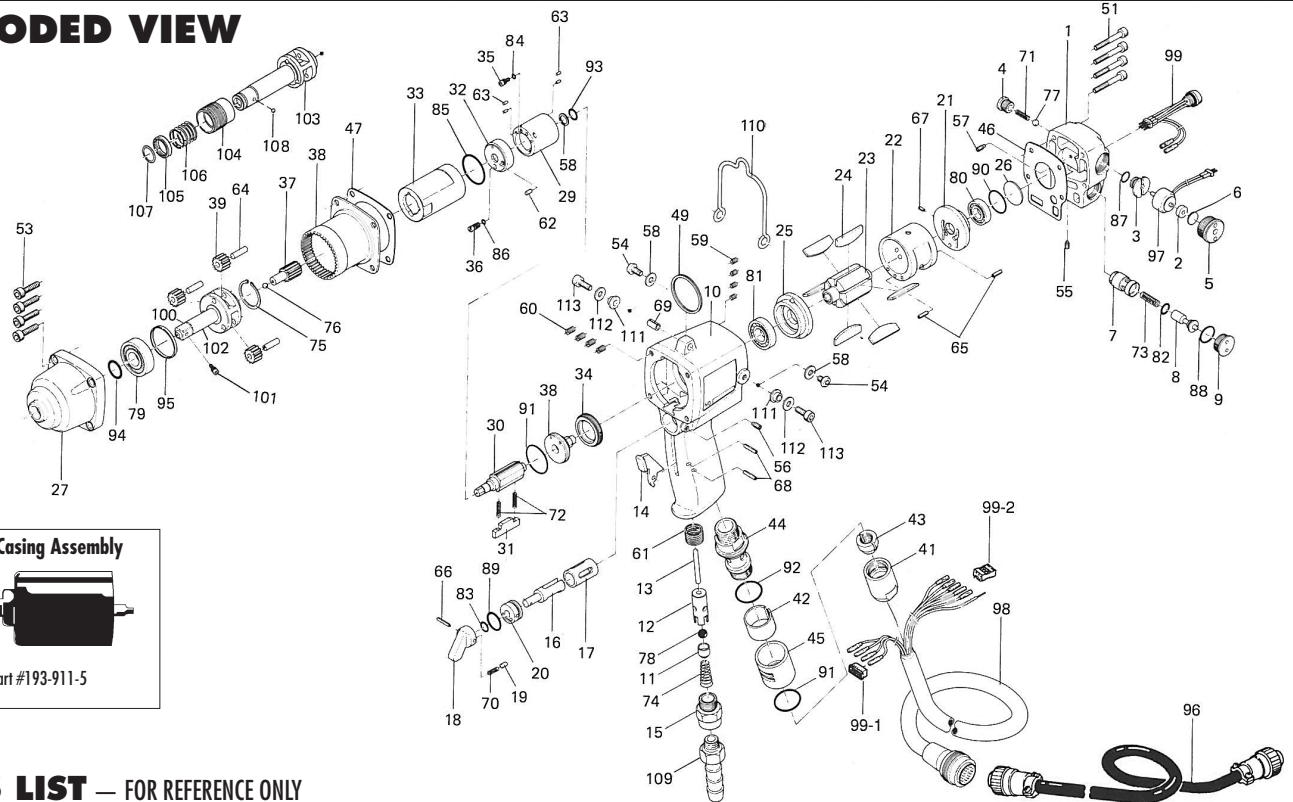


U-60EC & U-60DEC OIL-PULSE TOOLS

EXPLODED VIEW



PARTS LIST — FOR REFERENCE ONLY

Index Number	Part Number	Description	Qty.	Index Number	Part Number	Description	Qty.	Index Number	Part Number	Description	Qty.
1	193-012-5	Casing Cover	1	43	193-562-6	Stopper	2	81	982-403-0	Ball Bearing (EE4)	1
2	193-120-6	Valve Packing Spacer	1	43-1	193-788-5	Exhaust Stack Plate	1	82	990-003-0	O-Ring (P5)	1
3	193-147-6	Stop Valve Bushing	1	44	193-780-4	Silencer	1	83	990-205-0	O-Ring (JW1516-5)	1
4	193-148-6	Stop Valve Cover	1	45	193-782-6	Silencer Cover	1	84	990-320-0	O-Ring (ARPS68-003)	1 ●
5	193-149-6	Stop Valve Plug	1	46	193-854-5	Casing Packing	1	85	990-331-0	O-Ring (JW1530-21)	1 ●
6	193-872-6	Valve Packing	1	47	193-867-5	Front Casing Packing	1	86	990-900-0	O-Ring (SNS-2)	1 ●
7	193-253-5	Shut Off Valve Bushing	1	49	004-790-2	Suspension Ring	1	87	990-905-0	O-Ring (SNS-7)	1
8	193-254-5	Shut Off Valve	1	50	944-007-0	Back-up Ring (7.85 x 11.1 x 1)	1 ●	88	990-908-0	O-Ring (SNS-10)	1
9	193-927-5	Shut Off Valve Cover	1	51	945-030-0	Allen Head Bolt (M4 x 30)	1	89	990-910-0	O-Ring (SNS-12.5)	1
10	193-025-5	Casing	1	52	945-035-0	Allen Head Bolt (M4 x 35)	2	90	990-918-0	O-Ring (SNS-20)	1
11	185-100-1	Valve	1	53	945-118-0	Allen Head Bolt (M5 x 18)	4	91	990-919-0	O-Ring (SNS-22)	2 ●
12	063-102-3	Valve Bushing	1	54	945-949-0	Hexagon Round Head Bolt (M5 x 6)	2	92	990-921-0	O-Ring (SNS-22.4)	1
13	193-104-6	Valve Rod	1	55	952-006-0	Allen Head Dog Point Screw (M3 x 6)	1	93	990-951-0	O-Ring P8 (NOK)	1 ●
14	187-107-1	Valve Lever	1	56	952-108-0	Allen Head Dog Point Screw (M4 x 8)	1	94	990-012-0	O-Ring P12.5	1
15	185-091-7	Air Inlet Bushing	1	57	954-005-0	Allen Head Cone Point Screw (M3 x 5)	1	95	990-011-0	O-Ring P12	1
16	193-210-5	Reverse Valve	1	58	961-012-0	Flat Washer 5	2	96	891-300-1	Socket Retainer Pin Assembly	1
17	193-211-5	Reverse Valve Bushing	1	59	965-006-0	Heli-Sert (M4 x 1.5D)	4	97	891-340-1	Socket Spindle (P)	1
18	194-212-0	Reverse Lever	1	60	965-011-0	Heli-Sert (M5 x 1.5D)	4	98	909-751-0	Joint Cable Assembly	1
19	054-220-1	Reverse Lever Notch	1	61	965-073-0	Heli-Sert (UNF5/8) (N6)	1	99	909-754-0	LED Lump Assembly	1
20	194-222-0	Reverse Lever Setter	1	62	969-449-0	Pin (G) (3 x 6)	1	99-1	090-731-0	Connector (171822-4)	1
21	193-285-5	Rear Plate	1	63	970-091-0	Pin (H) (2 x 4.5)	4	99-2	909-733-0	Connector (RF-06)	1
22	193-286-5	Cylinder	1	64	972-166-0	Roller Pin (5 x 16)	3	PARTS FOR U-60EC			
23	193-287-5	Rotor	1	65	973-010-0	Roll Pin (2 x 10)	2	100	891-340-1	Socket Spindle Assembly (OP-P)	1
24	193-288-8	Blade (PC)	7	66	973-014-0	Roll Pin (2 x 14)	1	101	891-300-1	Socket Retainer Pin Assembly (P)	1
25	193-289-5	Front Plate	1	67	973-066-0	Roll Pin (2.5 x 6)	1	102	193-454-5	Socket Spindle (O)	1
26	193-291-6	Rear Plate Spacer	1	68	973-114-0	Roll Pin (3 x 14)	2	PARTS FOR U-60DEC			
27	193-439-5	Front Casing	1	69	973-340-0	Roll Pin (6 x 10)	1	103	192-350-7	Driver Anvil	1
28	193-901-5	Liner Rear Plate	1	70	976-025-0	Spring (3 x 8.5 x 0.5)	1	104	011-351-1	Bit Sleeve	1
29	191-902-6	Liner	1	71	976-240-0	Spring (4.3 x 14 x 0.4)	1	105	011-352-1	Bit Spacer	1
30	191-319-6	Anvil	1	72	976-790-0	Spring (2.8 x 15 x 0.4)	2 ●	106	976-327-0	Spring (13.5x11x0.9)	1
31	198-440-1	Driving Blade	1	73	976-228-0	Spring (4.7 x 14 x 0.5)	1	107	978-117-0	Snap Ring (11.7x1.0)	1
32	191-904-6	Liner Rear Plate	1	74	977-175-0	Cone Spring (7.5 x 10.3 x 22)	1	108	981-002-0	Ball (1/8)	1
33	191-905-6	Liner Casing	1	75	979-358-0	Inner Snap Ring (ISTW-17)	1	ACCESSORIES			
34	193-906-5	Liner Casing Cover	1	76	981-003-0	Ball (5/32)	1	110	193-790-6	Suspension Bail	1
35	191-970-6	Release Valve	1	77	981-024-0	Polyurethane Ball (5)	1	111	193-791-6	Suspension Receiver	1
36	190-742-6	Oil Plug	1	78	981-208-0	Ball (5/16) Black	1	112	193-792-6	Suspension Plate	1
37	193-446-5	Anvil Gear	1	79	982-241-0	Ball Bearing (6201ZZ)	1	113	945-112-0	Allen Head Bolt (M5 x 12)	1
38	193-465-5	Internal Gear	1	80	982-402-0	Ball Bearing (EE3)	1				
39	193-470-5	Planet Gear	3								
40	193-454-5	Socket Spindle (O)	1								
41	182-018-8	Cap	1								
42	193-042-5	Noise Filter	1								



10000 SE PINE
PORTLAND, OR 97216
503-254-6600
FAX 503-255-2615

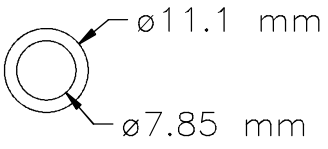
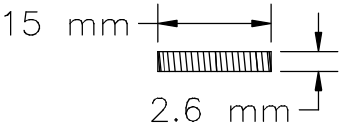
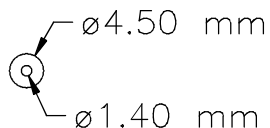
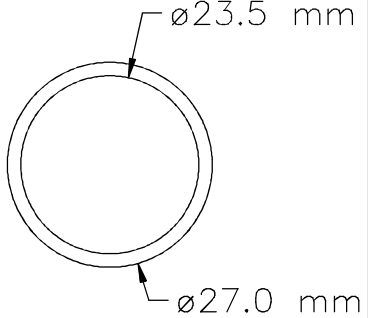
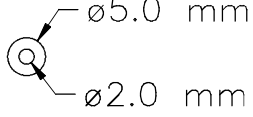
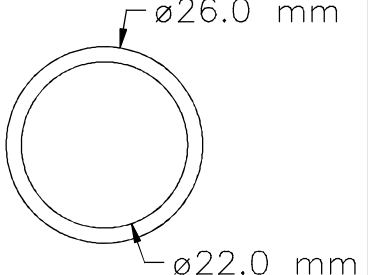
When ordering spare parts, please specify tool type, part number, and description.

FOOTNOTES

● = Items in Pulse Repair Kit U-60EC-PRK

U-60EC-PRK

(Kit contains following parts)

#/#	Bin Location	Part Number	QTY	Description	Material	Drawing / Scketch
1	PA10	944-007-0	1	Support Ring 7.85x11.1x1	Teflon-White	
2	PA1J	976-790-0	2	Spring 2.6x15 (.4) WPC	Spring wire ø.40 mm	
3	PA1A	990-320-0	1	O-Ring 4.5x1.4x1.6	Buna-Black	
4	PA1A	990-331-0	1	O-Ring (JW1530-21)	Buna-Black	
5	PA1B	990-900-0	1	O-Ring 5x2x1.5	Buna-Black	
6	PA1B	990-919-0	1	O-Ring (SNS-22) 22x26x2	Buna-Black	
7	PA1B	990-951-0	1	O-Ring (P8) (NOK) 8x12x2	Buna-Black	