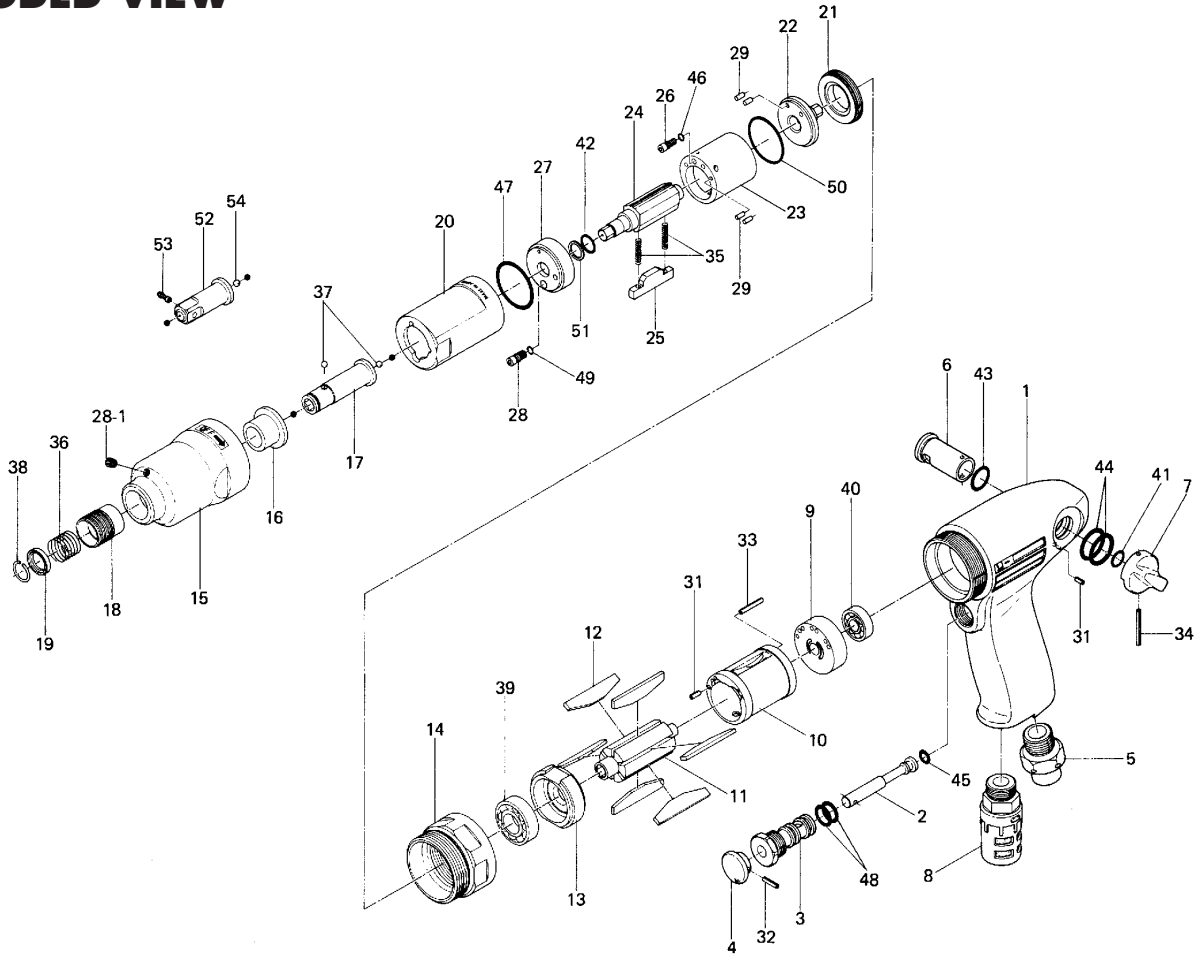


U-410 & U-410D OIL-PULSE TOOLS

EXPLODED VIEW



PARTS LIST — FOR REFERENCE ONLY

| Index Number | Part Number | Description | Qty. | Index Number | Part Number | Description | Qty. | Index Number | Part Number | Description | Qty. |
|--------------|-------------|---------------------|------|--------------|-------------|--------------------------|------|------------------------|-------------|----------------------------------|------|
| 1 | 191-025-5 | Handle | 1 | 23 | 191-902-6 | Liner | 1 | 44 | 990-014-0 | O-Ring (P14) | 2 |
| 2 | 603-100-2 | Valve | 1 | 24 | 191-319-6 | Anvil | 1 | 45 | 990-203-0 | O-Ring (JW1516-3) | 1 |
| 3 | 606-101-1 | Valve Bushing | 1 | 25 | 198-440-1 | Driving Blade | 1 | 46 | 990-320-0 | O-Ring (ARP568-003) | 1 ● |
| 4 | 603-107-2 | Throttle Trigger | 1 | 26 | 191-970-6 | Relief Valve | 1 | 47 | 990-331-0 | O-Ring (JW1530-21) | 1 ● |
| 5 | 191-091-5 | Air Inlet Bushing | 1 | 27 | 191-904-6 | Front Liner Plate | 1 | 48 | 990-610-0 | O-Ring (8 x 2) | 2 |
| 6 | 432-210-1 | Reverse Valve | 1 | 28 | 178-742-9 | Oil Plug | 1 | 49 | 990-900-0 | O-Ring (SNS-2) | 1 ● |
| 7 | 418-212-1 | Reverse Lever | 1 | 28-1 | 966-110-0 | Allen Head Plug (PT1/16) | 1 | 50 | 990-919-0 | O-Ring (SNS-22) | 1 ● |
| 8 | 191-885-5 | Silencer Assembly | 1 | 29 | 970-091-0 | Pin(H) (2 x 4.5) | 4 | 51 | 944-007-0 | Supporter Ring (7.85 x 11.1 x 1) | 1 ● |
| 9 | 891-122-1 | Rear Plate | 1 | 30 | 969-449-0 | Pin (G) (3 x 6) | 1 | | | | |
| 10 | 418-286-1 | Cylinder | 1 | 31 | 973-006-0 | Roll Pin (2 x 6) | 2 | PARTS FOR U-410 | | | |
| 11 | 191-287-6 | Rotor | 1 | 32 | 973-010-0 | Roll Pin (2 x 10) | 1 | 52 | 891-343-1 | SQ Drive Anvil | 1 |
| 12 | 197-288-6 | Blade | 6 | 33 | 973-016-0 | Roll Pin (2 x 16) | 1 | 53 | 891-300-1 | Socket Retainer Pin Assembly | 1 |
| 13 | 891-123-1 | Front Plate | 1 | 34 | 973-022-0 | Roll Pin (2 x 22) | 1 | 54 | 981-002-0 | Ball (1/8) | 1 |
| 14 | 197-035-6 | Handle Connector | 1 | 35 | 976-790-0 | Spring (2.8 x 15) | 2 ● | ACCESSORIES | | | |
| 15 | 191-439-7 | Front Casing | 1 | 36 | 976-327-0 | Spring (13.5 x 11) | 1 | 57 | 939-090-0 | Allen Wrench (1.5 mm) (55 x 55) | 1 |
| 16 | 190-328-6 | Anvil Bushing | 1 | 37 | 981-002-0 | Ball (1/8) | 2 | 58 | 939-104-0 | Allen Wrench (5 mm) | 1 |
| 17 | 197-350-0 | Driver Anvil | 1 | 38 | 978-117-0 | Snap Ring (11.7 x 1.0) | 1 | | | | |
| 18 | 011-351-1 | Bit Sleeve | 1 | 39 | 982-100-0 | Ball Bearing (6000) | 1 | | | | |
| 19 | 011-352-1 | Bit Spacer | 1 | 40 | 982-401-0 | Ball Bearing (EE2) | 1 | | | | |
| 20 | 191-905-6 | Liner Casing | 1 | 41 | 990-003-0 | O-Ring (P5) | 1 | | | | |
| 21 | 197-906-6 | Liner Casing Setter | 1 | 42 | 990-951-0 | O-Ring (PB) (NOK) | 1 ● | | | | |
| 22 | 197-901-7 | Rear Liner Plate | 1 | 43 | 990-007-0 | O-Ring (P9) | 1 | | | | |

FOOTNOTES

● = Items in Pulse Repair Kit U-410-PRK



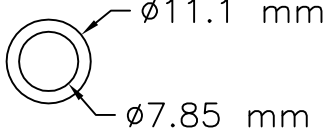
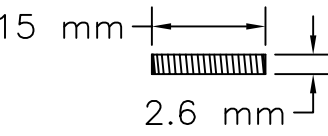
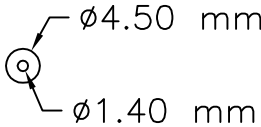
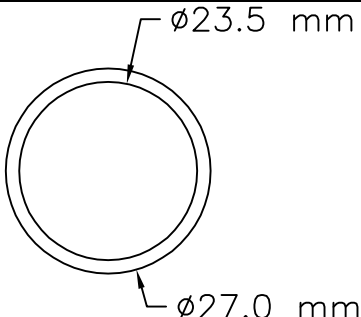
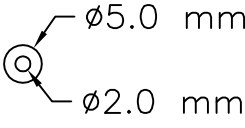
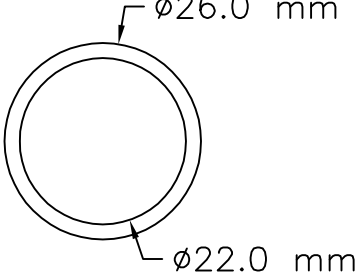
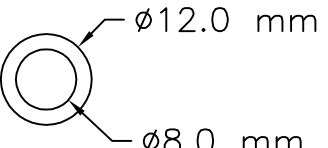
10000 SE PINE
PORTLAND, OR 97216
503-254-6600
FAX 503-255-2615

When ordering spare parts, please specify tool type, part number, and description.

REVISED 07/16

U-410-PRK

(Kit contains following parts)

| #/# | Bin Location | Part Number | QTY | Description | Material | Drawing / Scketch |
|-----|--------------|-------------|-----|--------------------------------|------------------------|---|
| 1 | PA10 | 944-007-0 | 1 | Support Ring 7.85x11.1x1 | Teflon-White |  |
| 2 | PA1J | 976-790-0 | 2 | Spring 2.6x15 (.4) WPC | Spring wire ø.40 mm |  |
| 3 | PA1A | 990-320-0 | 1 | O-Ring 4.5x1.4x1.6 | Buna-Black |  |
| 4 | PA1A | 990-331-0 | 1 | O-Ring (JW1530-21) | Buna-Black |  |
| 5 | PA1B | 990-900-0 | 1 | O-Ring 5x2x1.5 | Buna-Black |  |
| 6 | PA1B | 990-919-0 | 1 | O-Ring (SNS-22) 22x26x2 | Buna-Black |  |
| 7 | PA1B | 990-951-0 | 1 | O-Ring (P8) (NOK) 8x12x2 | Buna-Black |  |