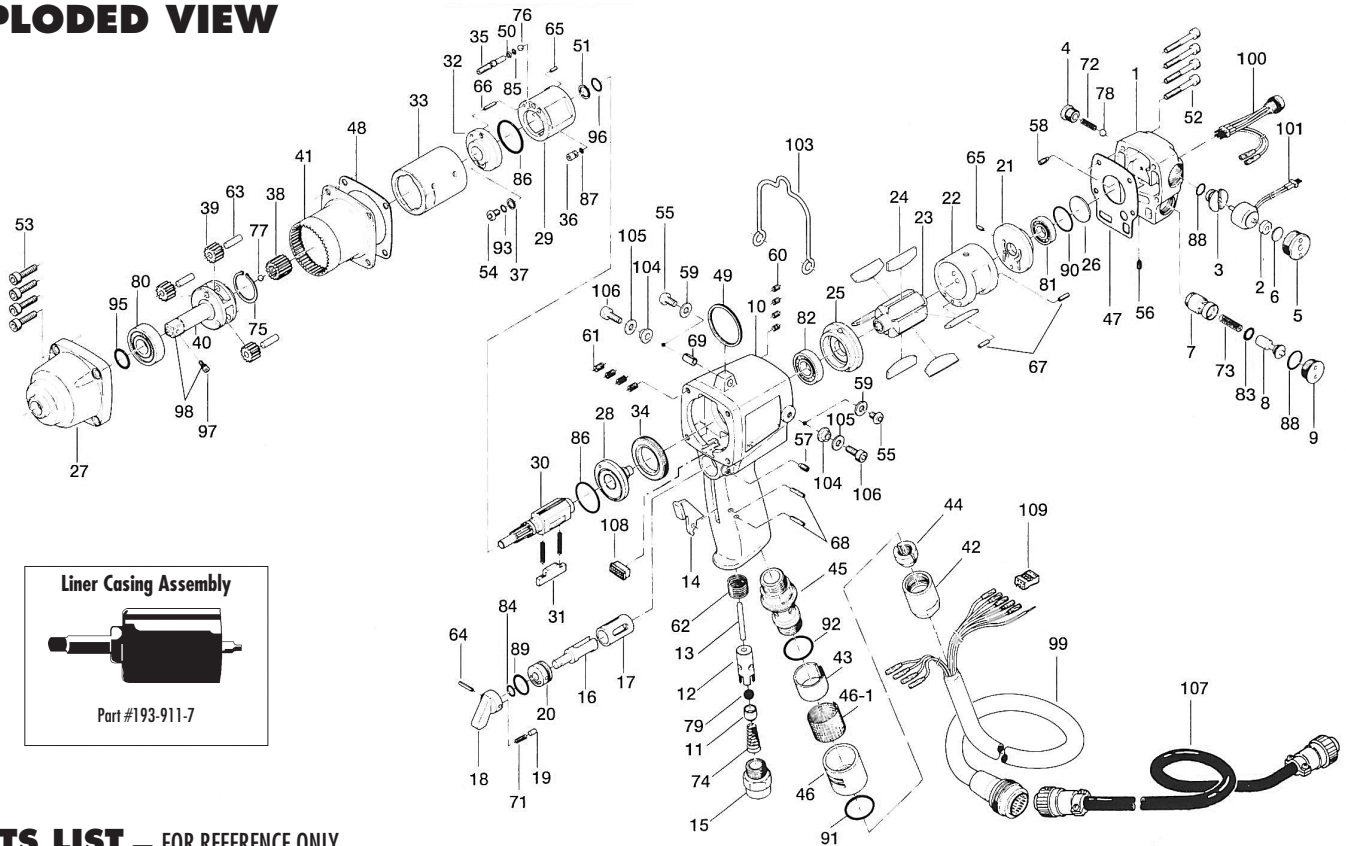


# U-100EC OIL-PULSE TOOL

## EXPLODED VIEW



## PARTS LIST — FOR REFERENCE ONLY

Index Number	Part Number	Description	Qty.	Index Number	Part Number	Description	Qty.	Index Number	Part Number	Description	Qty.
1	193-012-7	Casing Cover	1	40	193-454-7	Socket Spindle (Ø)	1	73	976-114-0	Spring (6 x 18 x 0.55)	1
2	193-120-6	Valve Packing Spacer	1	41	193-465-7	Internal Gear	1	74	977-175-0	Cone Spring (7.5 x 10.3 x 22)	1
3	193-147-6	Stop Valve Bushing	1	42	193-018-6	Cap	1	75	979-015-0	Inner Snap Ring (22)	1
4	193-148-6	Stop Valve Cover	1	43	181-099-0	Noise Filter	1	76	981-003-0	Ball (5/32)	1
5	193-149-6	Stop Valve Plug	1	43-1	193-042-5	Wire	1	77	981-006-0	Ball (1/4)	1
6	193-872-6	Valve Packing	1	44	193-562-6	Stopper	1	78	981-024-0	Polyurethane Ball (5)	1
7	193-253-7	Shut-Off Valve Bushing	1	45	193-780-7	Silencer	1	79	981-208-0	Ball (5/16) Black	1
8	193-254-6	Shut-Off Valve	1	46	193-782-6	Silencer Cover	1	80	982-243-0	Ball Bearing (6203ZZ)	1
9	186-927-6	Shut-Off Valve Cover	1	47	193-854-7	Casing Packing	1	81	982-403-0	Ball Bearing (EE-4)	1
10	193-025-7	Casing	1	48	193-867-7	Front Casing Packing	1	82	982-903-0	Ball Bearing (6902)	1
11	186-100-1	Valve	1	49	004-790-2	Suspension Ring	1	83	990-004-0	O-Ring (P6)	1
12	063-102-3	Valve Bushing	1	50	944-002-0	Back-up Ring (2.6 x 4.5 x 1)	1	84	990-205-0	O-Ring (JW1516-5)	1
13	193-104-6	Valve Rod	1	51	944-213-0	Back-up Ring (12 x 15.9 x 1)	1	85	990-320-0	O-Ring (ARP568-003)	1
14	187-107-1	Valve Lever	1	52	945-134-0	Allen Head Bolt (M5 x 34)	4	86	990-603-0	O-Ring (28.5 x 1.3)	2
15	185-091-7	Air Inlet Bushing	1	53	945-226-0	Allen Head Bolt (M6 x 26)	4	87	990-900-0	O-Ring (SNS-2)	1
16	187-210-1	Reverse Valve	1	54	945-942-0	Hexagon Round Head Bolt (M4 x 6)	1	88	990-905-0	O-Ring (SNS-7)	1
17	185-211-1	Reverse Valve Bushing	1	55	945-949-0	Hexagon Round Head Bolt (M5 x 6)	2	89	990-914-0	O-Ring (SNS-16)	2
18	023-212-4	Reverse Lever	1	56	952-006-0	Allen Head Dog Point Screw (M3 x 6)	1	90	990-917-0	O-Ring (SNS-24)	1
19	054-220-1	Reverse Lever Notch	1	57	952-108-0	Allen Head Dog Point Screw (M4 x 8)	1	91	990-919-0	O-Ring (SNS-22)	1
20	187-222-1	Reverse Valve Setter	1	58	954-005-0	Allen Head Cone Point Screw (M3 x 5)	1	92	990-921-0	O-Ring (SNS-22.4)	1
21	193-285-7	Rear Plate	1	59	961-012-0	Flat Washer (5)	2	93	990-971-0	O-Ring (SNS-3 NOK)	1
22	187-286-3	Cylinder	1	60	965-011-0	Heli-Sert (M5 x 1.5D)	4	95	990-213-0	O-Ring (1.513-13)	1
23	187-287-1	Rotor	1	61	965-021-0	Heli-Sert (M6 x 1.5D)	4	96	992-020-0	O-Ring (Q-12 NTN)	1
24	193-288-0	Blade (PC)	6	62	965-071-0	Heli-Sert (UNF5/8 x 1D)	1	97	891-304-1	Socket Retainer Pin Assembly	1
25	187-289-3	Front Plate	1	63	972-221-0	Roller Pin (6 x 21)	3	98	891-342-1	Socket Spindle (P)	1
26	193-291-7	Rear Plate Spacer	1	64	973-016-0	Roll Pin (2 x 16)	1	99	909-751-0	Joint Cable Assembly	1
27	193-439-7	Front Casing	1	65	973-066-0	Roll Pin (2.5 x 6)	2	100	909-545-0	LED Lump Assembly	1
28	185-901-1	Liner Rear Plate	1	66	973-072-0	Roll Pin (2.5 x 12)	1	100-1	975-079-0	Spacer (12.7 x 10.3 x 3)	1
29	186-902-1	Liner	1	67	973-108-0	Roll Pin (3 x 8)	2	101	909-753-0	Solenoid Valve Assembly	1
30	193-319-7	Anvil	1	68	973-114-0	Roll Pin (3 x 14)	2				
31	186-440-1	Driving Blade	1	69	973-340-0	Roll Pin (6 x 10)	1				
32	193-904-7	Liner Front Plate	1	70	976-237-0	Spring (2.8 x 17.7 x 0.4)	2				
33	186-905-1	Liner Casing	1	71	976-025-0	Spring (3 x 8.5 x 0.5)	1				
34	185-906-1	Liner Casing Cover	1	72	976-241-0	Spring (4.3 x 18 x 0.45)	1				
35	186-907-3	Release Valve Spindle	1								
36	185-908-1	Accumulator Cover	1								
37	185-807-1	Spacer	1								
38	193-446-7	Anvil Gear	1								
39	193-470-7	Planet Gear	3								

### ACCESSORIES

### FOOTNOTES



10000 SE PINE  
PORTLAND, OR 97216  
503-254-6600  
FAX 503-255-2615

When ordering spare parts, please specify tool type, part number, and description.