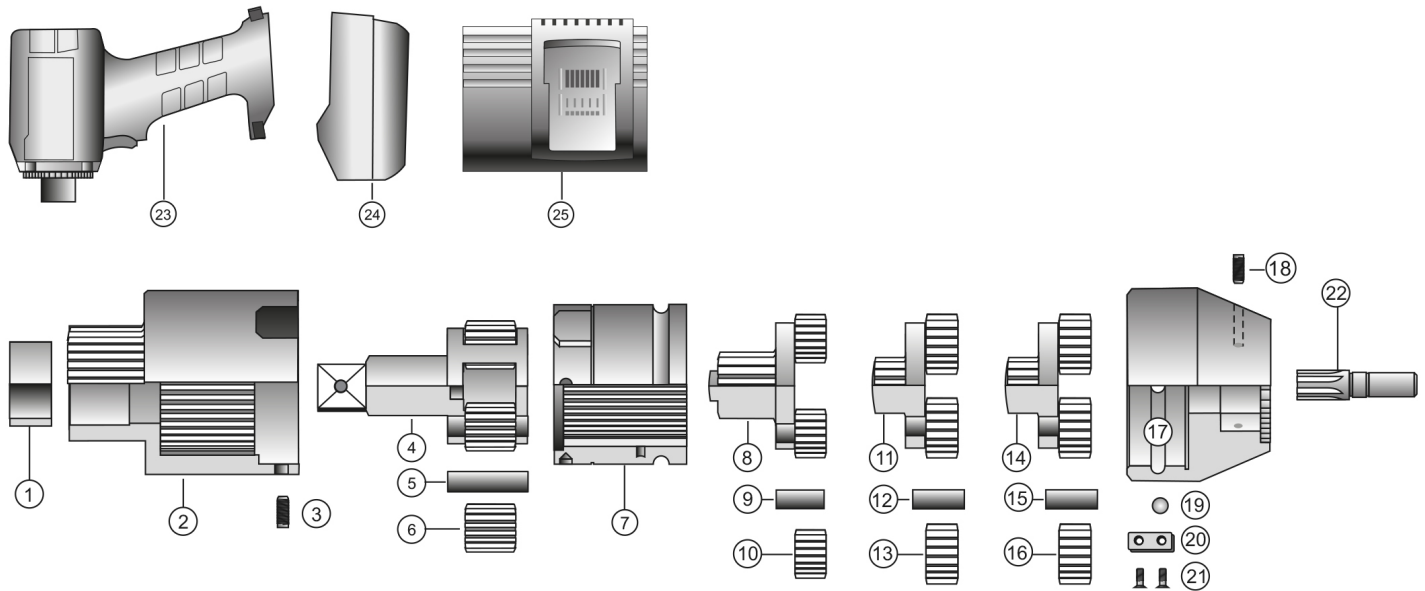


ABG2200 HT BATTERY TORQUE WRENCH

EXPLODED VIEW



PARTS LIST — FOR REFERENCE ONLY

| Index Number | Part Number | Description | Qty. | Index Number | Part Number | Description | Qty. | Index Number | Part Number | Description | Qty. |
|--------------|-------------|-------------------------------|------|--------------|-------------|-------------------------------|------|--------------|-------------|-------------------------------------|------|
| | 17002 | (Parts available in kit only) | 1 | 10 | 10144 | Planet Gears | 3 | 20 | 14505 | Closing Cover | 1 |
| 1 | | Sleeve | 1 | | 17022 | (Parts available in kit only) | 1 | 21 | 20099 | Counter Sunk Screw (M3 x 8) | 2 |
| 2 | | Gear Housing | 1 | 11 | | Gear Cage | 1 | 22 | 13106 | Motor Shaft | 1 |
| 3 | 20020 | Stud Bolts (M6 x 10) | 4 | 12 | | Bearing Pins (8 x 21.5) | 3 | 23 | 13101 | Motor EA | 1 |
| | 17013 | (Parts available in kit only) | 1 | 13 | | Planet Gears | 3 | 24 | ABG-B1852 | Battery Pack Li-Ion 18 V, 5.2 Ah | 2 |
| 4 | | Gear Cage | 1 | | 17032 | (Parts available in kit only) | 1 | 25 | ABG-C18110 | Charger Station 110 VAC | 1 |
| 5 | | Bearing Pins (10 x 45.5) | 4 | 14 | | Gear Cage | 1 | | ABG-C18220 | Charger Station 220 VAC | 1 |
| 6 | | Planet Gears | 4 | 15 | | Bearing Pins (8 x 21.5) | 3 | | | | |
| 7 | 14512 | Rotary Housing | 1 | 16 | 10143 | Planet Gears | 3 | | | | |
| | 17025 | (Parts available in kit only) | 1 | 17 | 14520 | Bearing Flange | 1 | | | | |
| 8 | | Gear Cage | 1 | 18 | 20299 | Stud Bolts (M5 x 10) | 4 | | | | |
| 9 | | Bearing Pins (8 x 21.5) | 3 | 19 | 20108 | Ball RB-8 (8 mm) | 26 | | | | |

FOOTNOTES



10000 SE PINE
PORTLAND, OR 97216
503-254-6600
FAX 503-255-2615

When ordering spare parts, please specify
tool type, part number, and description.